

Radioactivity field research report

Between **July 17 and July 20, 2025**, some of the members associated with the Applied Geography Research Center (GeA) traveled to the geographic terrain to monitor the level of radioactivity in the Crucea locality, Suceava county. During the 4 days dedicated to monitoring, sampling and questioning residents regarding the risks to which they are exposed, the following results were obtained:

- surveying 200 residents of different age groups regarding their knowledge of radioactivity and the effects on the local community;
- field measurements were carried out for 100 paired points, both at ground level and in the air at 2 m height. In total, 400 values were obtained that expressed the radiation level in the researched area;

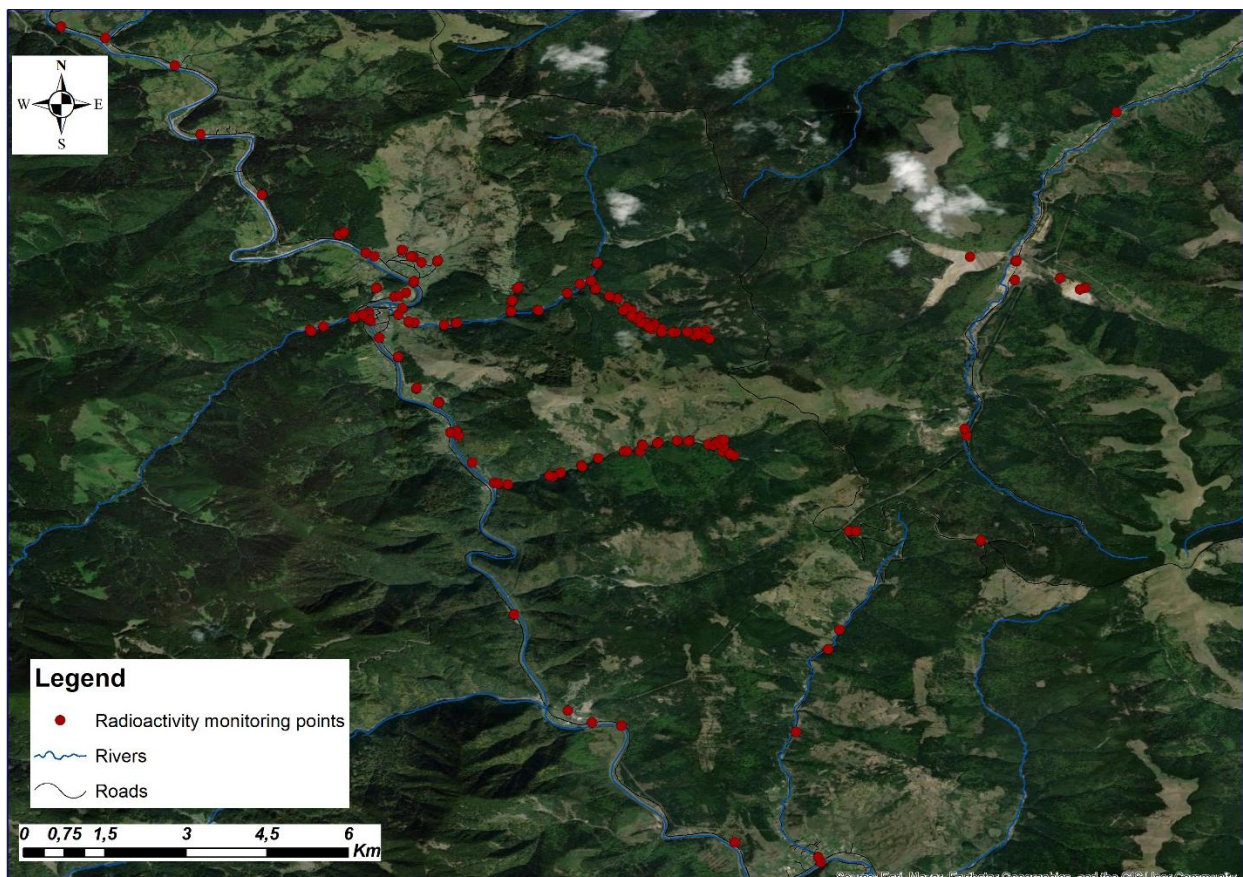


Fig. 1 Radioactivity monitoring points in Crucea, Suceava County

- taking water samples from the main watercourses that cross the area of interest.



Fig. 2 Images from field research conducted between July 17 and July 20, 2025

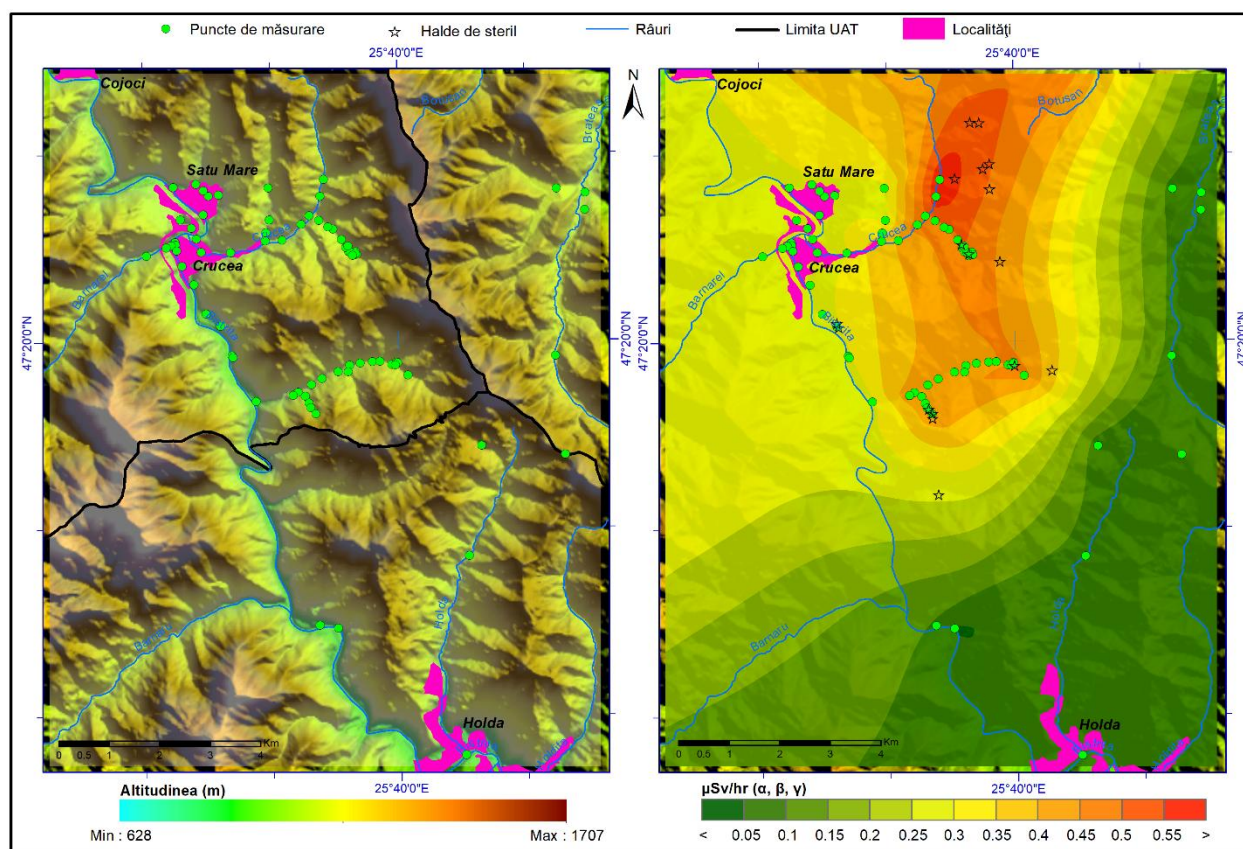


Fig. 3. Cartographic products produced following other radioactivity measurement campaigns in Crucea, Suceava County

Dr. Dumitru Mihăilă
 Dr. Petruț-Ionel Bistricean
 Dr. Bogdan Nistor
 Drd. Mihalache Andrei
 Drd. Alina Marcu Nistor
 student Simona Scripca